

## Monthly Weather Summary in Thailand May 2015

Under the influence of heat low pressure cell covering upper Thailand during early May and the periodically of the southerly and southeasterly wind prevailing over the upper Thailand, the weather in May 2015 was swelter especially in upper Thailand where hot weather was continuously presented almost the whole month and very hot weather in some areas during the first half of the month. Monthly mean temperature was higher than normal in all regions and the monthly mean temperature over Thailand was 1.4 °C higher than normal. For rainfall, May 2015 was actually drier than usual with less and uneven distribution of rain. However, rainfall was mainly occurred during mid-May onwards affected by the southwesterly winds which blowing over the Andaman Sea, Thailand and the Gulf of Thailand and strengthened during the end of May associated with the low pressure cell covering the Gulf of Martaban during May 21-23 brought successive rainfall in many areas that considered as the beginning of the rainy season of the year on May 22. Monthly rainfall was lower than normal in every parts i.e. northern part 98.6 mm (55%), northeastern part 95.7 mm (51%), central part 119.1 mm (69%), eastern part 111.9 mm (50%) and southern part (east coast) 24.2 mm (17%) and southern part (west coast) 76.7 mm (25%). The total rainfall over Thailand in May was 46% below normal.

**1 - 10 May :** Heat low pressure cell covered upper Thailand and the southeasterly wind prevailed over lower northeastern, central and eastern parts during the first half of the period. In addition, the southwesterly and southerly wind prevailed over upper Thailand during the second half of the period. These conditions caused generally hot weather in upper Thailand and very hot in some places especially in the northern part that continuously swelter in many areas with very hot weather in some areas. The highest temperature was 42.0 °C at Amphoe Mueang in Sukhothai province on May 5. For rainfall, there was isolated to widely scattered rainfall in upper Thailand with heavy rainfall in some areas except for fairly widespread rain with heavy to very heavy rainfall in some areas in northeastern part on May 5 and 9. The maximum daily rainfall of 144.2 millimeter was measured at agrometeorological station in Surin province on May 9. Thunderstorm with gusty wind occurred in many areas of upper Thailand mainly in the northern and northeastern parts and hail was reported at Bangkok Metropolis on May 8. For southern Thailand, hot weather was mainly observed along the east coast with the highest maximum temperature of 38.5 °C at Amphoe Phunphin in Surat Thani province on May 6. Widely scattered to scattered rain was found with isolated heavy to very heavy rainfall, the highest daily rainfall was 100.0 millimeter at agrometeorological station in Surat Thani province on May 9.

**11 - 20 May :** Hot weather persisted in Thailand with very hot weather in some areas of the northern and central parts. The maximum temperature was 42.4°C at Amphoe Mueang in Nakhon Sawan province on May 12. With the influence of the southeasterly and southerly wind prevailing over Thailand during the first half of the period and the blowing of southwesterly wind over Thailand and the Gulf of Thailand during the second half of the period, the rainfall over upper Thailand was increasing from the previous period especially scattered to fairly widespread rain with heavy to very heavy rainfall in the northern and northeastern regions. The highest daily rainfall of 104.6 millimeter was measured at Amphoe Mae Tha in Lampang

province on May 14. Thunderstorm and gusty wind occurred at Phetchabun and Maha Sarakham provinces on May 12 at Chiang Rai and Buriram provinces on May 14 at Chiang Rai and Nan provinces on May 16 at Maha Sarakham province on May 17 and at Ubon Ratchathani province on May 18. For southern part, temperature was decreasing by abundant rainfall nearly the whole period however hot weather remained in many areas along the east coast, the maximum daily temperature of 37.9 °C was recorded at Nong Phlub agrometeorological station in Prachuap Khiri Khan province on May 19 whereas the heaviest daily rainfall was 162.0 millimeter at Amphoe Su-ngai Kolok in Narathiwat province on May 16.

**21 - 31 May :** During this period, the southwesterly wind prevailed over the Andaman Sea and Thailand and the low pressure cell covering the Gulf of Matabun during early period accompanied with the passage of the easterly wave over upper Thailand on the last day of the period. These conditions caused fairly widespread rain with isolated heavy rainfall in northern region during early period after that rainfall was relatively decreased while widely scattered to scattered rain was measured in the northeastern, central and eastern parts. The maximum daily rainfall was 109.9 millimeter at Amphoe Klong Yai in Trat province on May 29. In southern part, plentiful of rainfall was mainly observed during mid-period with the highest daily rainfall of 108.6 millimeter at Amphoe Singhanakhon in Songkhla province on May 27. However, hot weather persisted in upper Thailand with very hot weather during late period, the maximum temperature of 41.7 °C was measured at Amphoe Mueang in Ubon Ratchathani province and at Amphoe Chai Badan in Lop Buri province on May 31.

---

**Note :** Rainfall, temperatures and natural disasters available in this report are preliminary data.

Climatological Center  
Meteorological Development Bureau  
Thai Meteorological Department

Monthly Current Report  
Rainfall and Accumulative Rainfall  
May 2015

Northern Thailand

Station	Temperature (°c)		Rainfall (mm)		Accumulative rainfall (mm) Since 1 January	
	Mean	Above or below normal	Actual	Above or below normal	Actual	Above or below normal
Chiang Rai	28.5	1.4	107.1	-106.3	379.8	19.0
Mae Hong Son	30.6	1.7	154.4	-20.1	219.0	-47.9
Phayao	29.2	1.4	96.1	-83.6	286.2	-27.8
Chiang Mai	30.4	2.2	76.5	-85.5	236.7	-13.5
Tha Wang Pha	29.0	0.9	144.0	-39.0	411.3	76.3
Nan	29.8	1.2	56.2	-121.1	320.0	-5.9
Lamphun	30.1	1.4	121.9	-32.9	330.4	110.3
Lampang	30.3	1.5	99.6	-60.8	231.0	-29.7
Mae Sariang	29.9	1.5	111.9	-50.4	201.4	-27.8
Phrae	30.5	1.5	85.1	-93.0	248.2	-54.2
Uttaradit	31.7	1.9	86.5	-143.5	179.7	-164.7
Bhumibol Dam	31.8	2.6	39.4	-158.2	198.3	-96.0
Tak	32.1	2.5	14.9	-160.0	159.1	-96.3
Mae Sot	29.5	1.6	106.5	-67.7	234.8	-9.6
Umphang	27.0	1.4	111.5	-83.5	318.0	-42.1
Phitsanulok	31.6	1.7	35.9	-135.0	165.7	-105.0
Lom Sak	30.2	1.6	9.7	-141.1	90.4	-189.3
Phetchabun	30.6	1.8	60.2	-102.6	189.5	-118.9
Wichian Buri	31.3	1.9	15.7	-142.4	271.9	-47.0
Kamphaeng Phet	31.5	2.3	50.2	-145.3	172.4	-128.0
Over the area	30.3	1.7	79.2	-98.6 -55%	242.2	-50.0 -17%

Northeastern Thailand

Station	Temperature (°c)		Rainfall (mm)		Accumulative rainfall (mm) Since 1 January	
	Mean	Above or below normal	Actual	Above or below normal	Actual	Above or below normal
Nong Khai	31.1	2.5	54.7	-170.2	210.5	-163.2
Loei	29.3	1.6	62.3	-137.0	277.6	-86.0
Udon Thani	30.3	1.4	95.7	-102.8	304.5	-46.1
Nakhon Phanom	30.2	1.8	197.1	-60.0	240.9	-211.4
Sakon Nakhon	30.3	1.9	224.6	-3.0	423.6	11.2
Mukdahan	30.8	2.0	119.7	-79.8	210.3	-125.5
Khon Kaen	30.7	1.8	55.6	-113.1	179.2	-146.6
Kosum Phisai	31.4	2.1	24.8	-136.7	94.0	-226.8
Roi Et	31.1	2.1	71.7	-114.4	211.9	-114.1
Chaiyaphum	31.4	2.5	46.0	-94.2	114.6	-188.3
Ubon Ratchathani	30.7	1.7	98.6	-110.0	174.6	-168.7
Tha Tum	31.6	2.1	80.7	-91.6	189.6	-134.8
Surin	30.8	2.0	125.6	-54.2	304.5	-31.3
Nakhon Ratchasima	31.0	1.9	74.1	-80.0	165.9	-121.8
Chok Chai	30.5	1.7	72.5	-76.5	226.5	-60.1
Nang Rong	30.3	1.5	58.6	-108.0	220.3	-100.1
Over the area	30.7	1.9	91.4	-95.7 -51%	221.8	-119.6 -35%

- NOTES :
- 1) Mean temperature is the average of daily dry-bulb temperature
  - 2) "T" is trace, rainfall amount less than 0.1 mm.
  - 3) "blank" is incomplete data.
  - 4) Temperature and rainfall are preliminary data.

Monthly Current Report  
Rainfall and Accumulative Rainfall  
May 2015

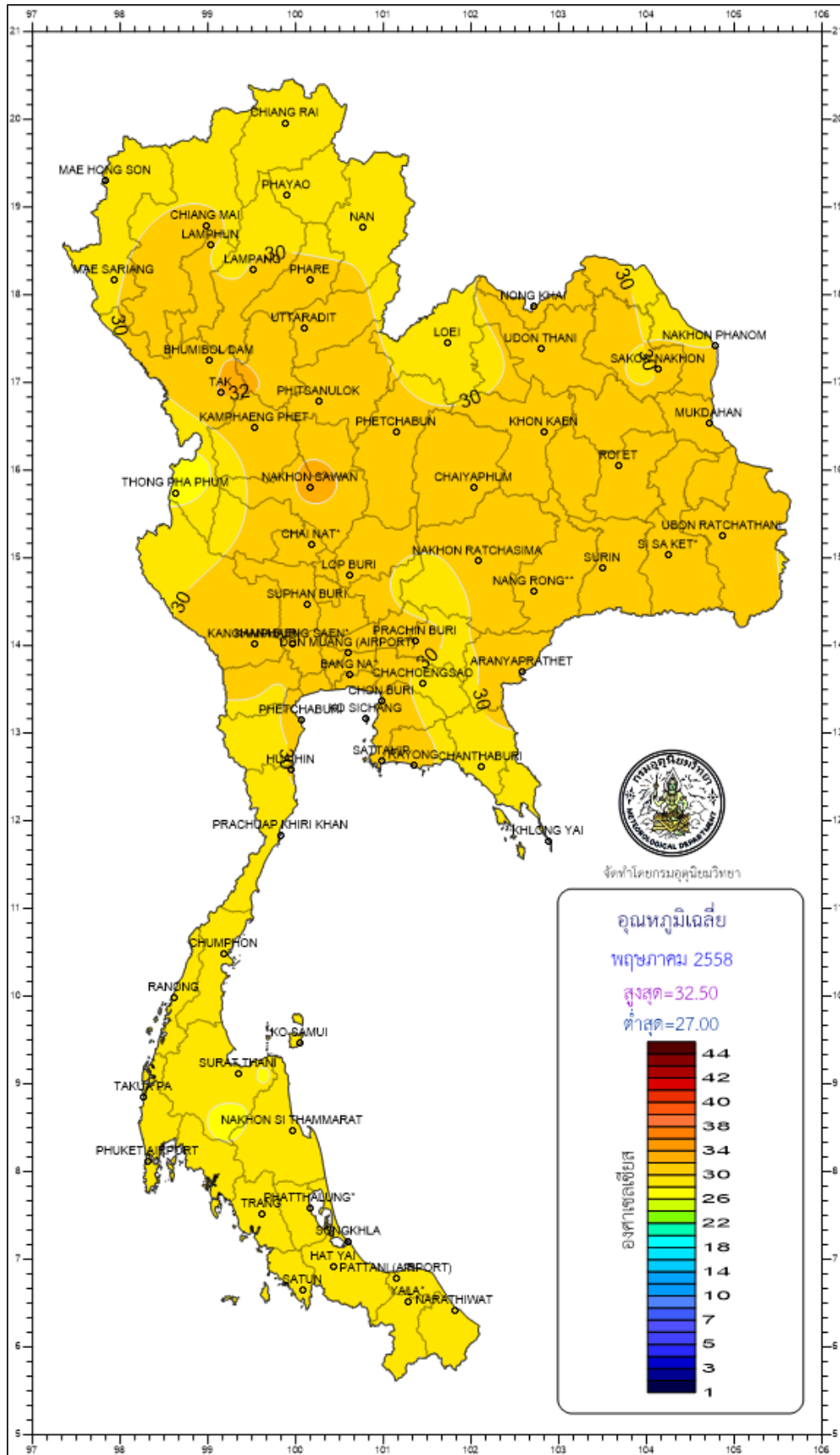
Central Thailand

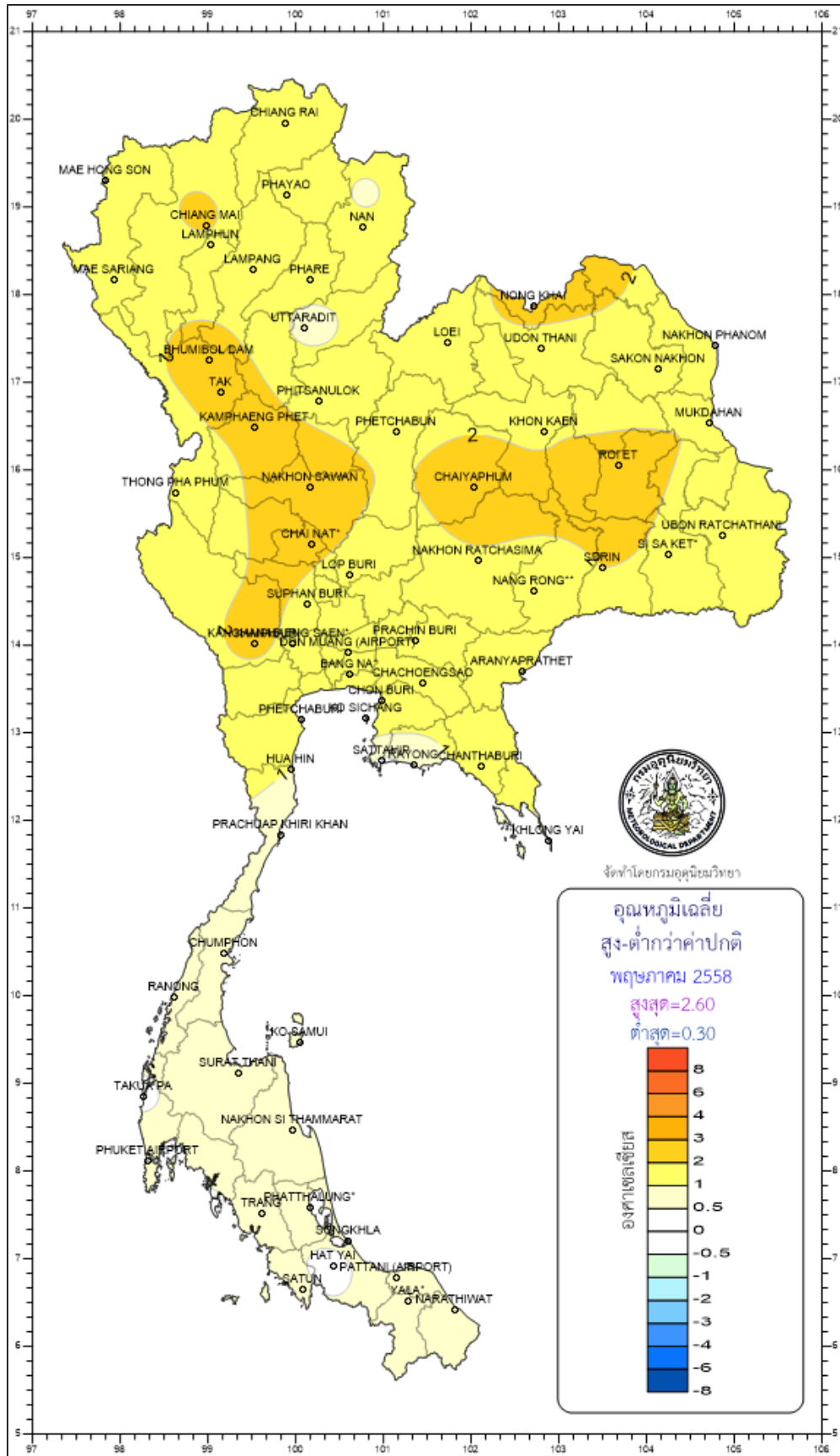
Station	Temperature ( °c)		Rainfall (mm)		Accumulative rainfall (mm) Since 1 January	
	Mean	Above or below normal	Actual	Above or below normal	Actual	Above or below normal
Nakhon Sawan	32.5	2.5	35.6	-115.1	137.9	-125.8
Bua Chum	31.0	1.7	45.1	-91.1	210.8	-68.4
Lop Buri	31.3	1.7	27.5	-119.6	240.2	-33.1
Suphan Buri	31.7	1.9	8.5	-105.8	180.1	-12.8
Thong Pha Phum	29.7	1.6	131.2	-96.3	282.2	-115.3
Kanchanaburi	31.9	2.2	10.2	-135.1	170.9	-103.4
Bangkok Airport	31.0	1.2	83.1	-124.5	262.7	-94.2
Bangkok Metropolis	31.1	1.2	82.5	-165.2	415.6	1.1
Over the area	31.3	1.8	53.0	-119.1 -69%	237.6	-69.0 -23%

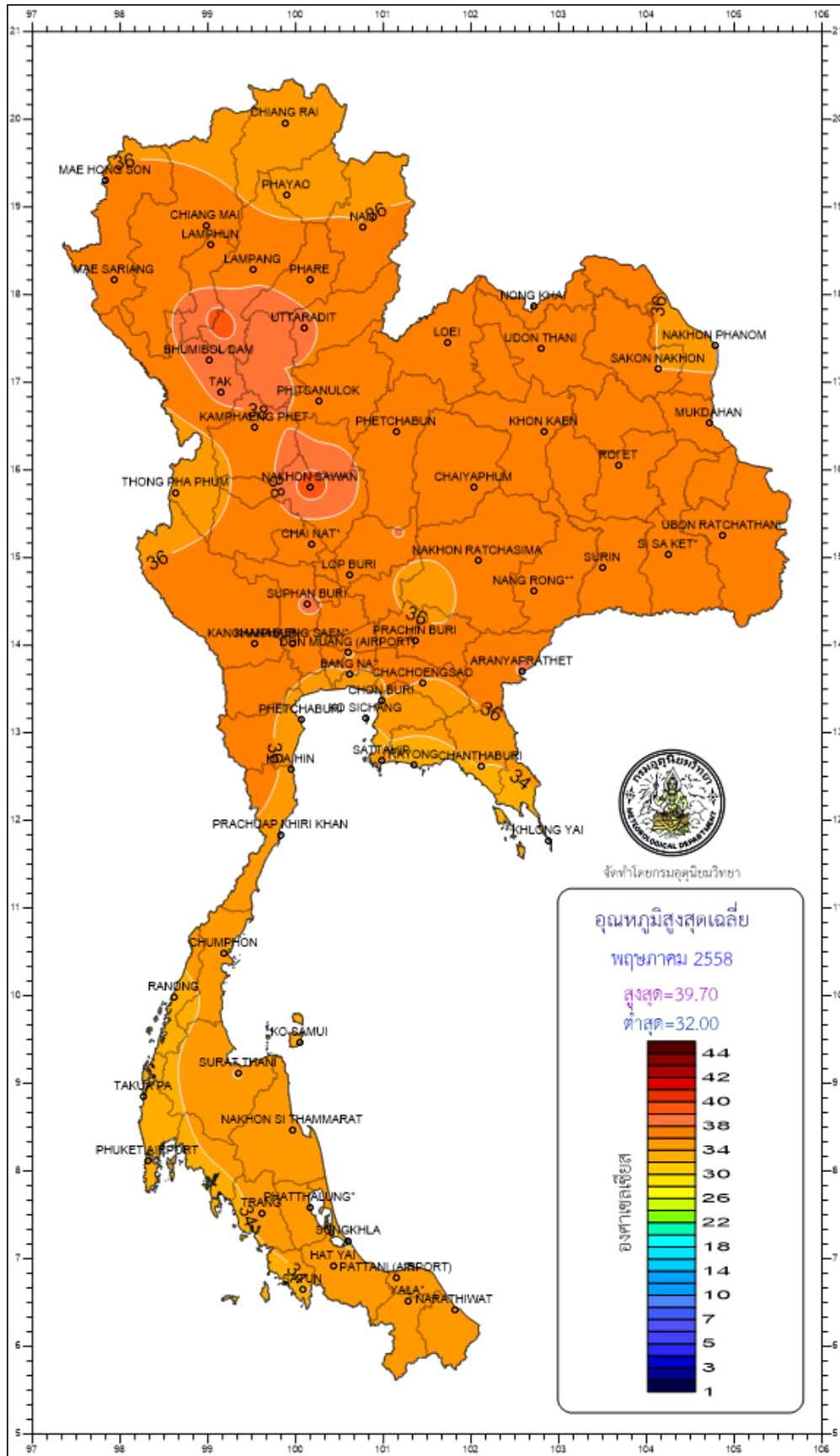
Eastern Thailand

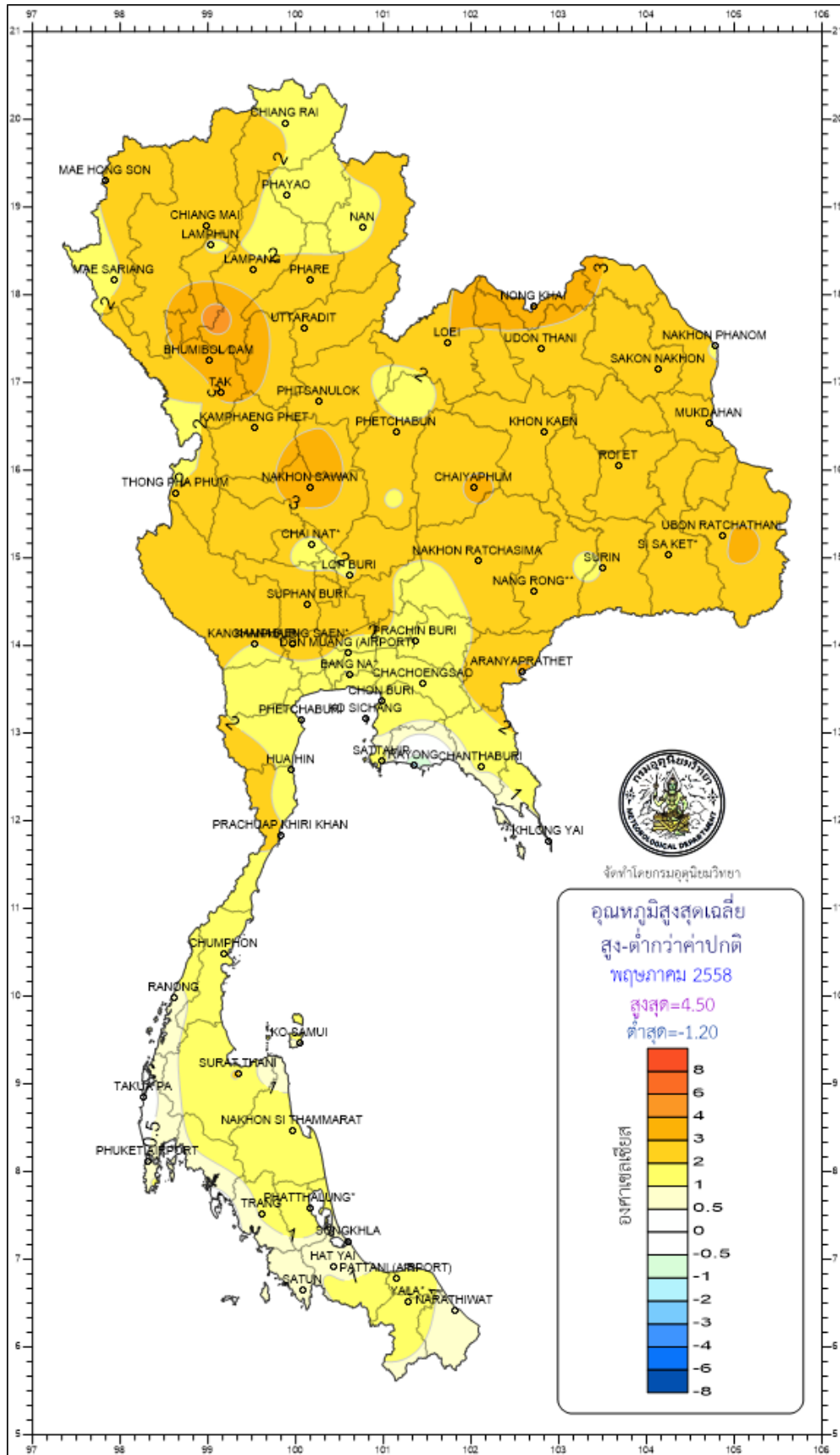
Station	Temperature ( °c)		Rainfall (mm)		Accumulative rainfall (mm) Since 1 January	
	Mean	Above or below normal	Actual	Above or below normal	Actual	Above or below normal
Prachin Buri	31.0	1.7	69.5	-161.5	291.3	-131.1
Kabin Buri	29.9	1.0	121.2	-71.1	273.1	-103.4
Aranyaprathet	31.2	2.0	29.7	-138.6	117.9	-221.5
Chon Buri	31.5	1.7	12.8	-162.5	182.4	-138.7
Ko Sichang	30.7	1.1	22.6	-111.8	119.6	-168.3
Pattaya	30.2	1.0	22.9	-125.4	174.9	-120.6
Sattahip	30.0	0.4	35.1	-136.8	165.9	-188.7
Rayong	30.3	0.6	175.6	-23.0	270.1	-137.6
Chanthaburi	29.6	1.3	293.1	-99.4	447.9	-196.8
Khlong Ya	29.0	0.8	337.6	-89.1	581.0	-269.6
Over the area	30.3	1.1	112.0	-111.9 -50%	262.4	-167.7 -39%

- NOTES :
- 1) Mean temperature is the average of daily dry-bulb temperature
  - 2) "T" is trace, rainfall amount less than 0.1 mm.
  - 3) "blank" is incomplete data.
  - 4) Temperature and rainfall are preliminary data.

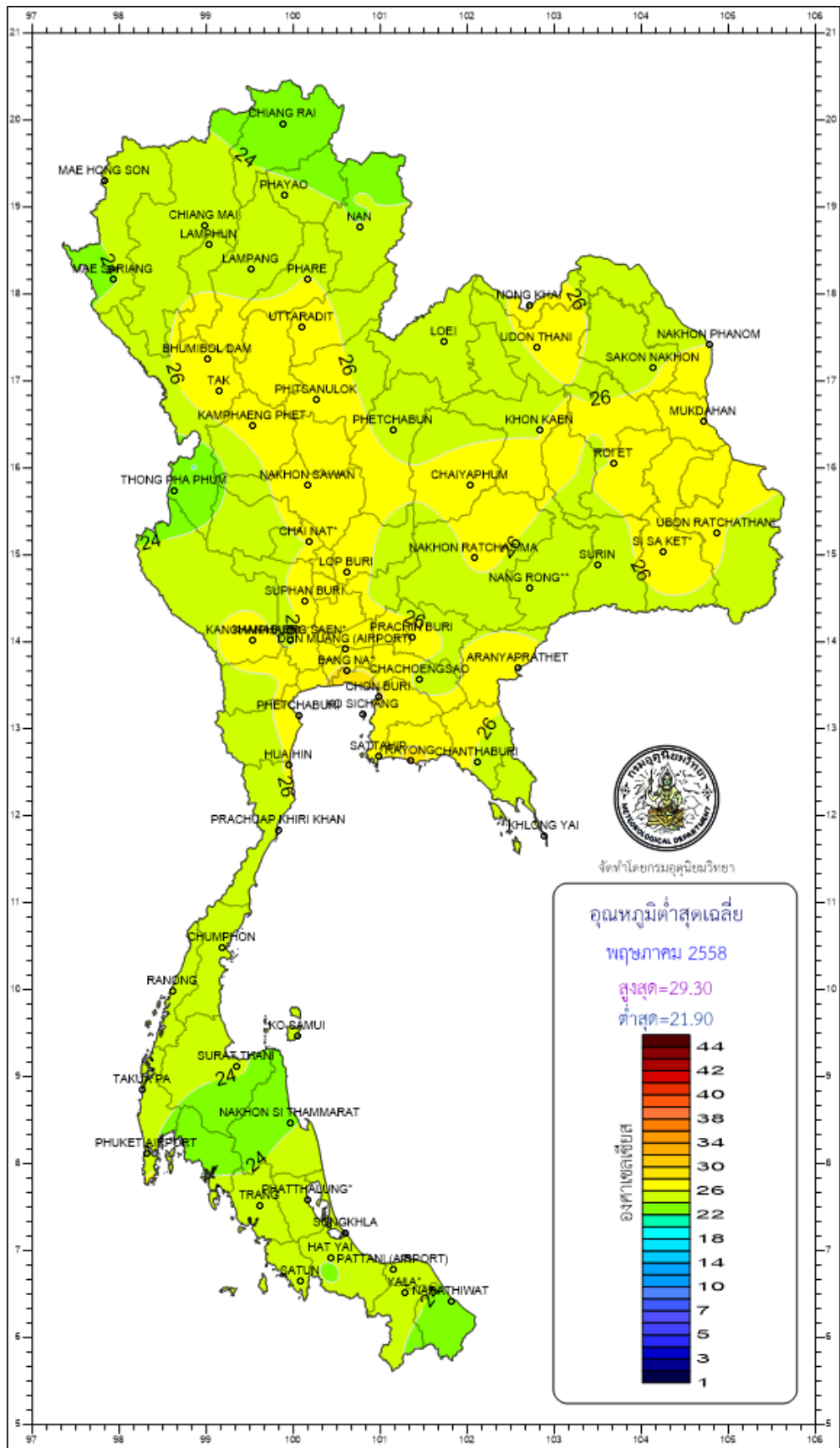


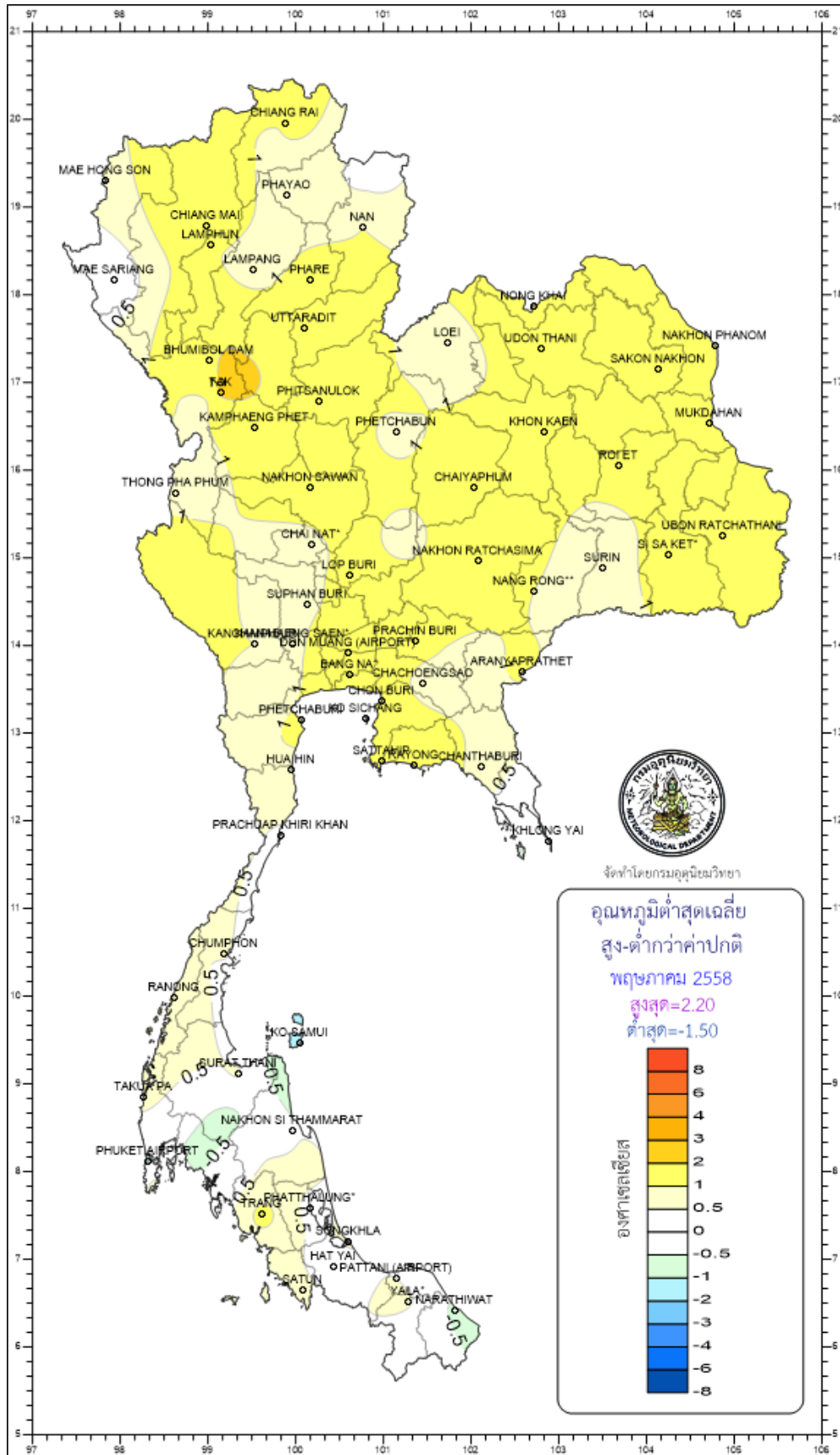


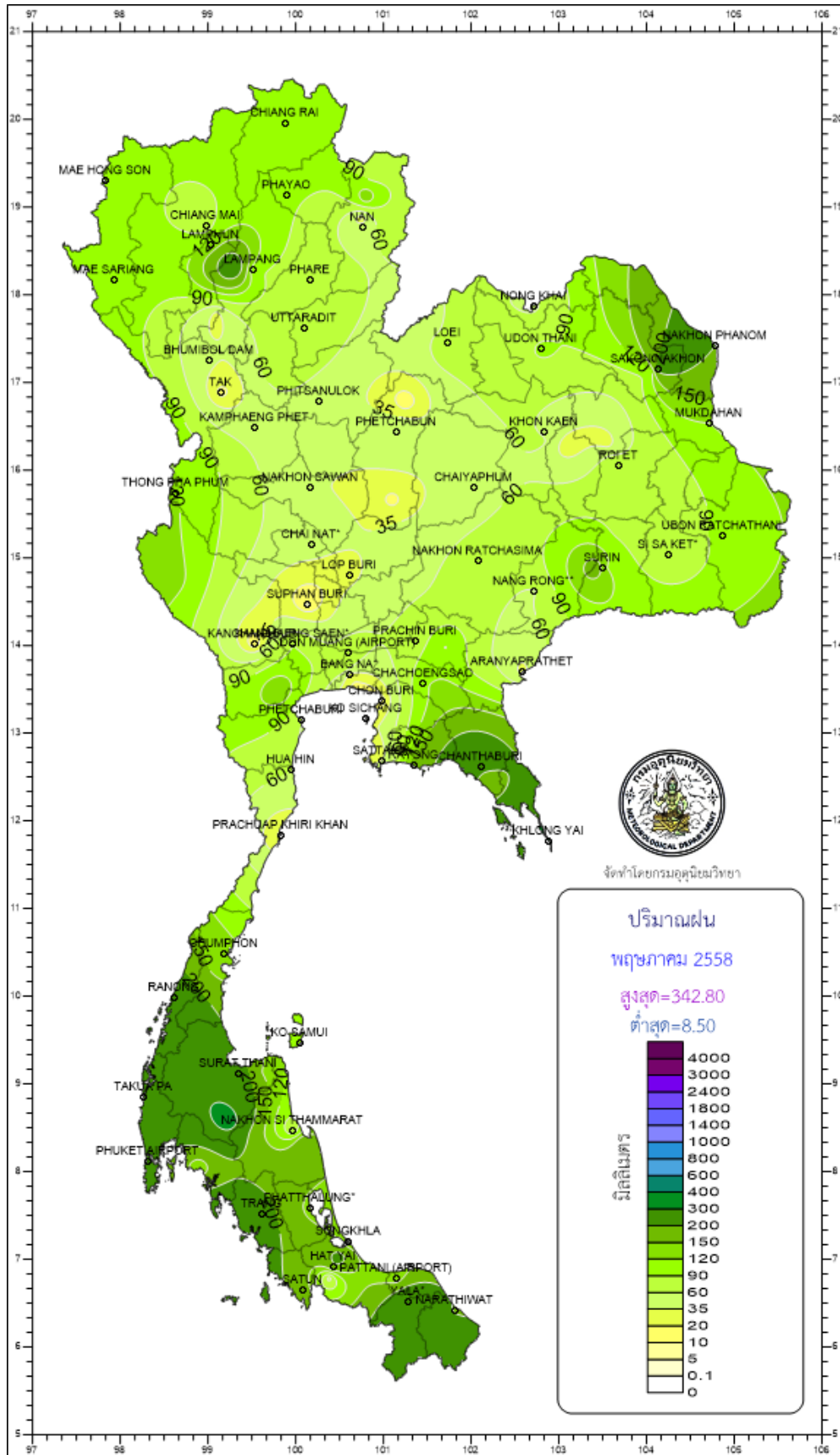


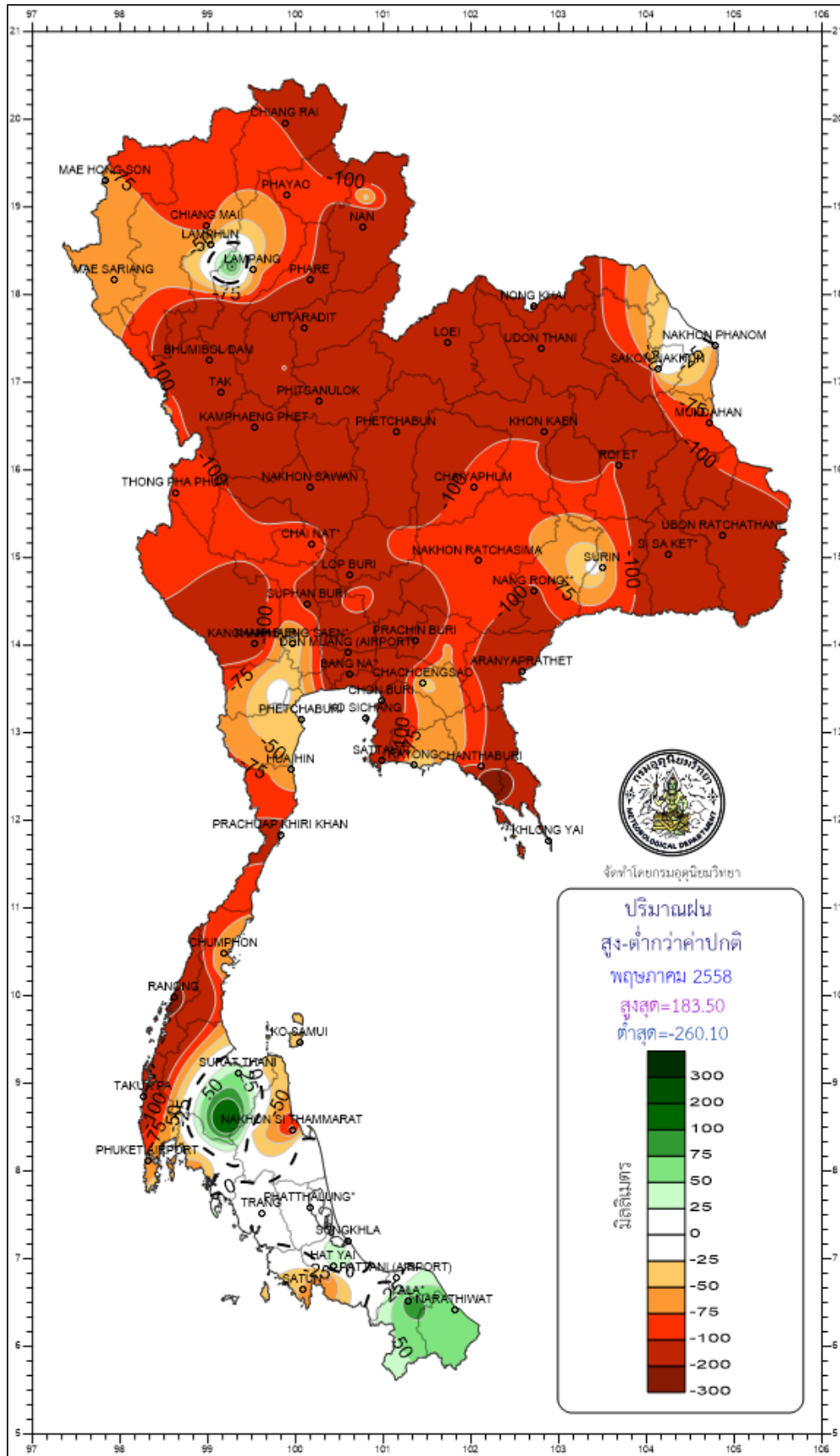


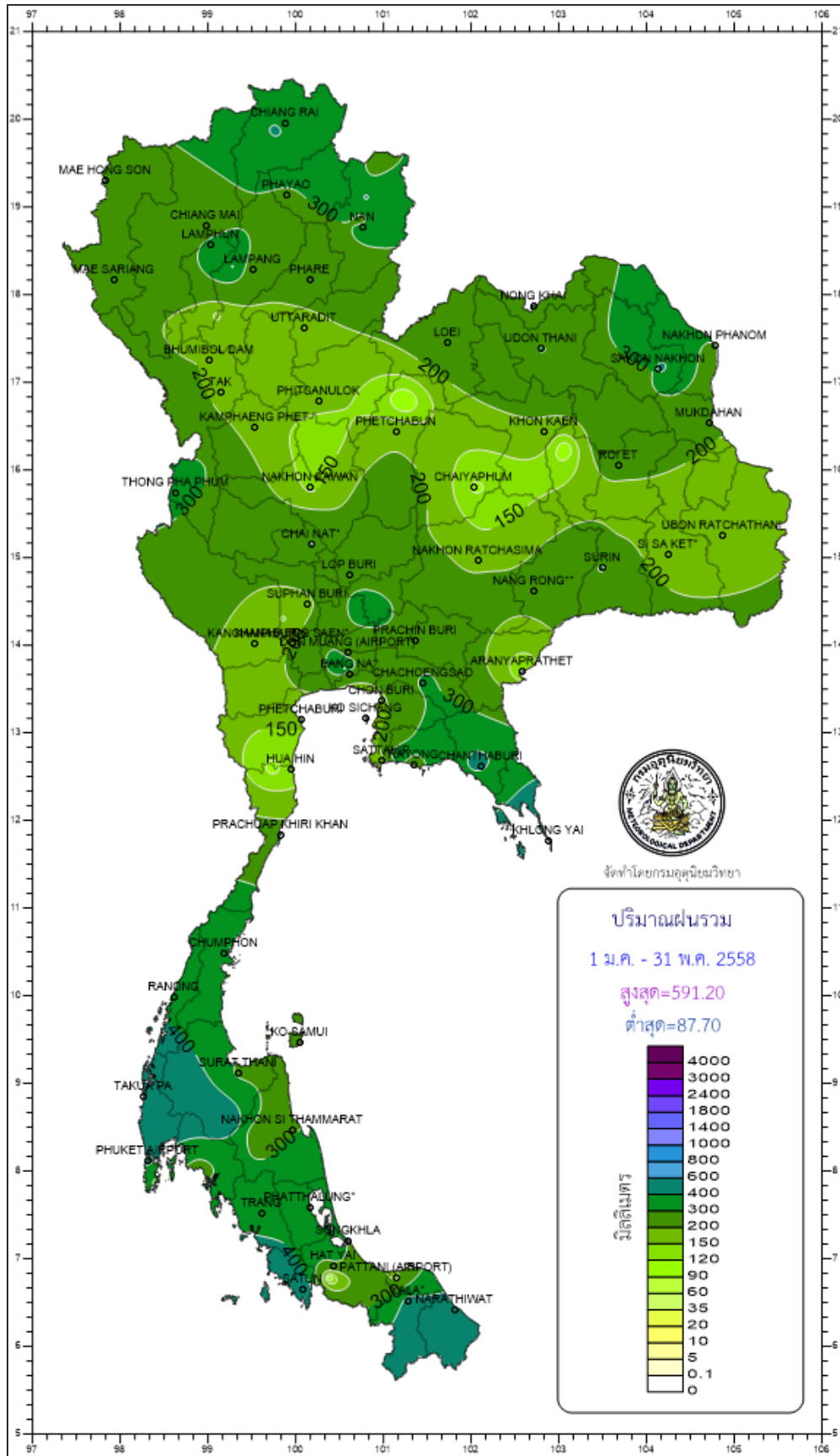


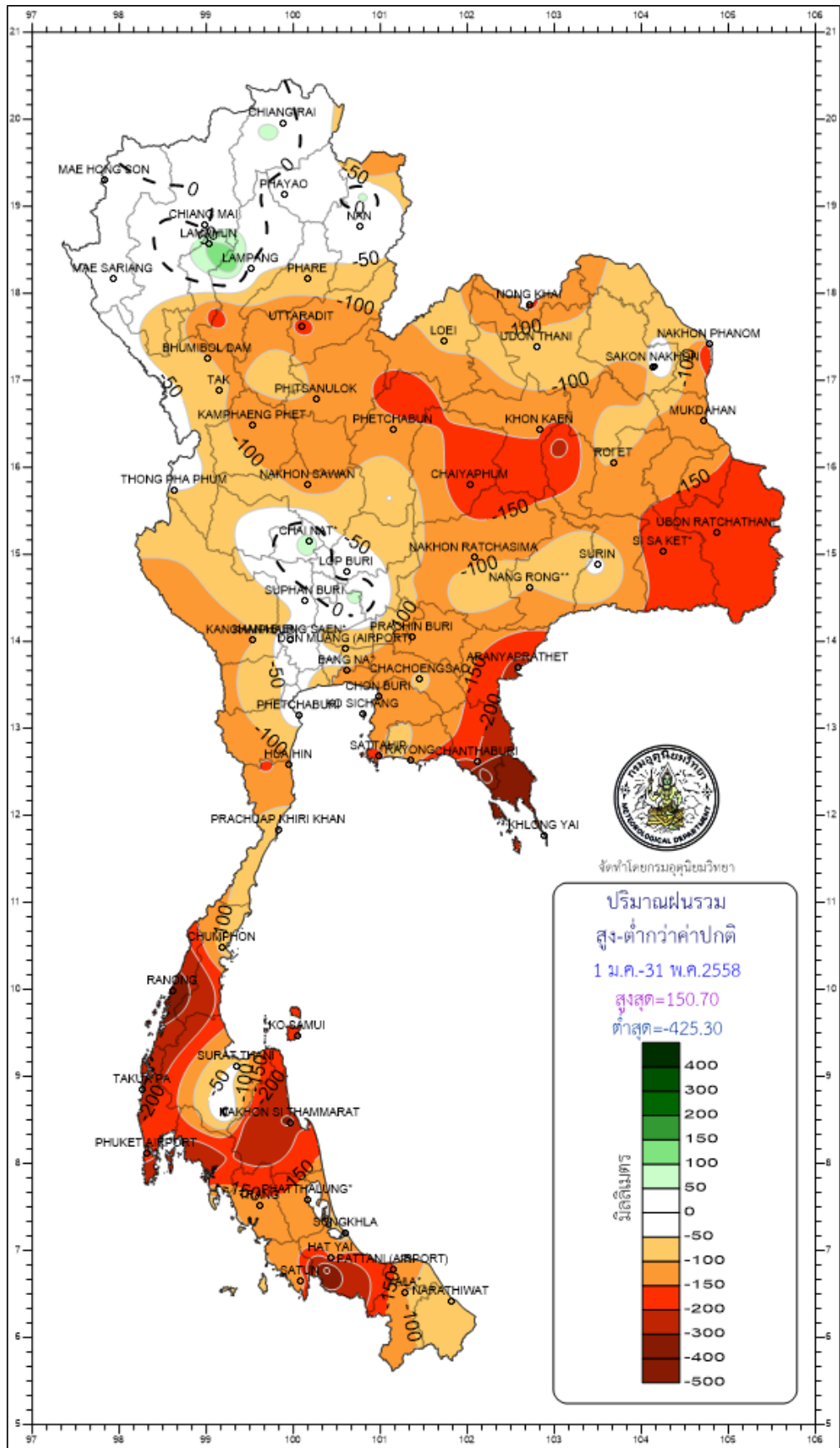














Monthly Current Report  
Rainfall and Accumulative Rainfal  
May 2015

Southern Thailand, east coast

Station	Temperature ( °c)		Rainfall (mm)		Accumulative rainfall (mm) Since 1 January	
	Mean	Above or below normal	Actual	Above or below normal	Actual	Above or below normal
Phetchaburi	30.5	1.1	61.2	-38.3	165.2	-19.6
Hua Hin	30.3	1.0	60.7	-48.2	134.4	-101.9
Prachuap Khiri Khan	29.7	0.8	16.4	-110.5	229.2	-71.2
Chumphon	28.8	0.8	136.4	-54.4	399.7	-78.2
Surat Thani	28.6	0.9	235.1	57.1	284.2	-40.3
Ko Samui	29.6	0.7	108.1	-47.8	274.7	-185.7
Nakhon Si Thammarat	28.8	0.6	65.1	-108.7	265.7	-318.4
Songkhla	29.5	0.7	120.8	1.2	295.2	-82.6
Hat Yai Airport	28.1	0.3	189.2	41.5	272.4	-147.2
Pattani Airport	29.0	0.8	125.7	-11.8	187.6	-156.8
Narathiwat	28.9	0.7	195.9	53.8	436.0	-51.6
Over the area	29.3	0.8	119.5	-24.2 -17%	267.7	-114.0 -30%

Southern Thailand, west coast

Station	Temperature ( °c)		Rainfall (mm)		Accumulative rainfall (mm) Since 1 January	
	Mean	Above or below normal	Actual	Above or below normal	Actual	Above or below normal
Ranong	28.5	0.8	259.9	-236.7	353.0	-387.4
Takua Pa	28.3	0.4	264.7	-172.8	591.2	-251.4
Phuket	29.3	0.5	214.3	-45.2	288.9	-241.2
Phuket Airport	29.2	0.8	214.0	-67.5	425.1	-174.1
Ko Lanta	29.1	0.4	275.7	30.9	398.5	-60.7
Trang Airport	28.4	0.7	224.7	7.2	353.2	-140.7
Satun	28.7	0.6	180.4	-52.9	518.7	-109.6
Over the area	28.8	0.6	233.4	-76.7 -25%	418.4	-195.0 -32%

- NOTES :
- 1) Mean temperature is the average of daily dry-bulb temperature
  - 2) "T" is trace, rainfall amount less than 0.1 mm.
  - 3) "blank" is incomplete data.
  - 4) Temperature and rainfall are preliminary data.